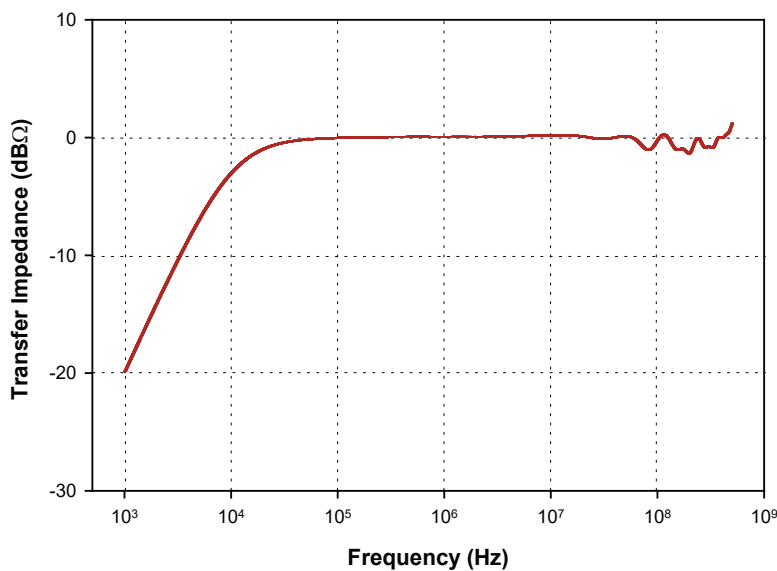
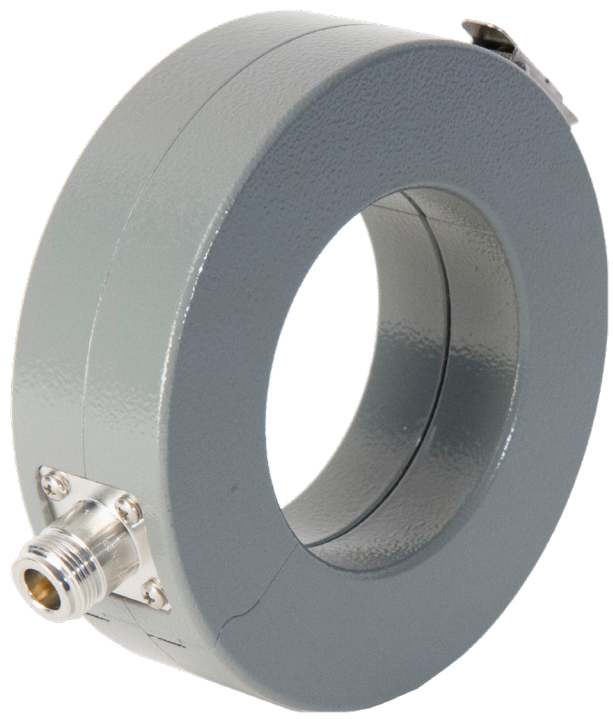


CURRENT PROBE

The F-75B has the advantage of being equipped with a large aperture of 70 mm, making it ideal for large cable bundles. The F-75B can be used to measure pulse currents up to 100 amperes in magnitude with 800 picosecond risetime and pulse widths of 40 nanoseconds. It can operate up to 200 amperes of DC – 400 Hz, 10 amperes of CW, and 100 amperes of peak pulse current.



Specifications

Frequency:	1 kHz – 500 MHz
Internal diameter:	70 mm
External diameter:	125 mm
Height:	38 mm
Z _t Ω ¹ :	1
dBΩ ¹ :	0
Connector:	Type-N
DC to 400 Hz:	250 amperes
RF(CW):	10 amperes
Peak Pulse Current ² :	100 amperes

1: Probe calibrated with 50 Ω + j0Ω Load Impedance.
2: Depends upon the pulse width and pulse rep. rate.



Fischer Custom Communications, Inc.

19220 Normandie Ave., Unit B Torrance, CA 90502
Phone: 310-303-3300

Email: sales@fischercc.com

© Fischer Custom Communications, Inc.