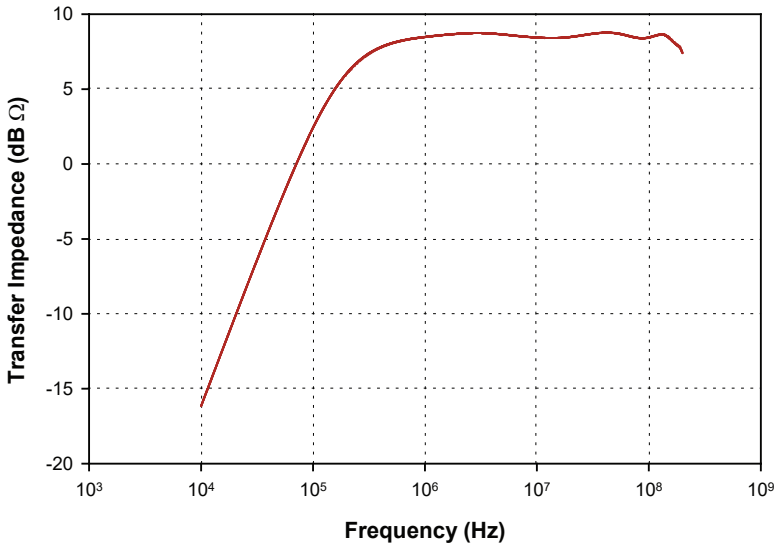
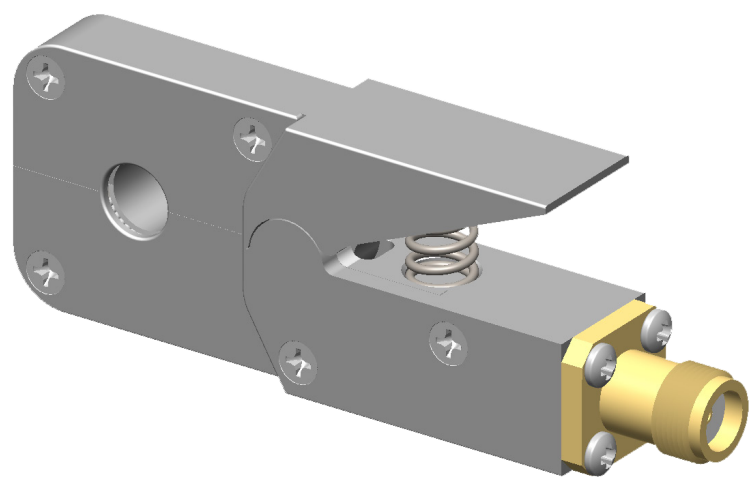


F - 38-1

CURRENT PROBE

The F-38-1 Current Probe has a split core mechanical design permitting it to easily clip on and off a conductor. It has an extremely small form factor for clipping on conductors in small spaces. The F-38-1 offers a wide bandwidth measurement capability for the lab and bench environment.



Specifications

Frequency:	1 kHz – 200 MHz
Internal diameter:	5 mm
External diameter:	54 mm
Height:	10 mm
Z _t Ω ¹ :	2.8
dBΩ ¹ :	9
Connector:	SMA
DC to 400 Hz:	20 amperes
RF(CW):	1 ampere
Peak Pulse Current ² :	10 amperes

1: Probe calibrated with 50 Ω + j0Ω Load Impedance.
2: Depends upon the pulse width and pulse rep. rate.



Fischer Custom Communications, Inc.

19220 Normandie Ave., Unit B Torrance, CA 90502
Phone: 310-303-3300

Email: sales@fischercc.com

© Fischer Custom Communications, Inc.