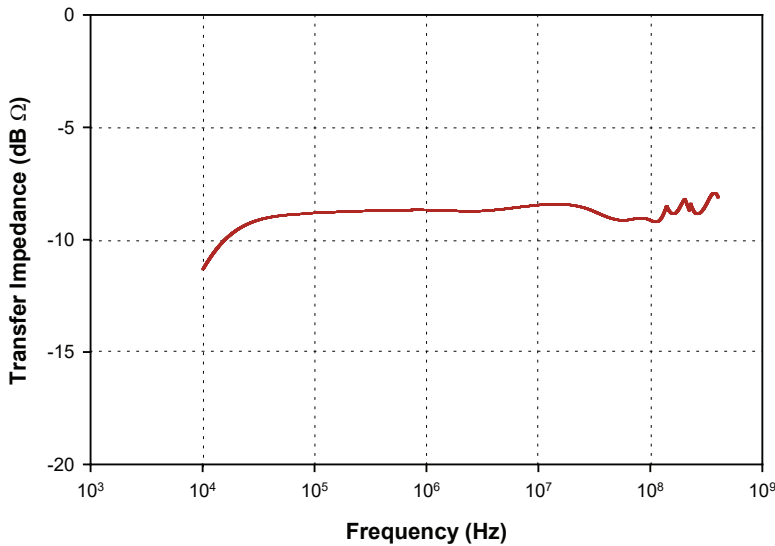
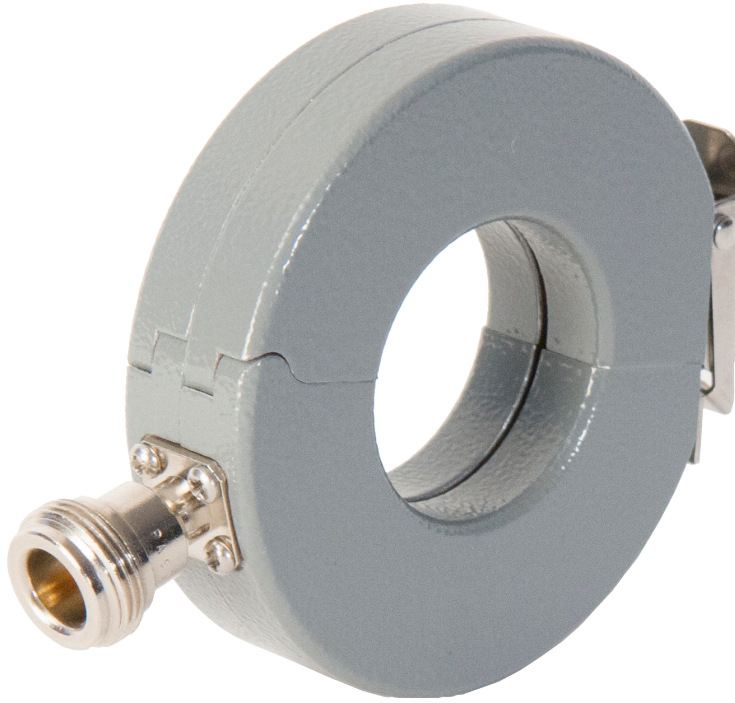


F - 170710-1005-1

CURRENT PROBE

The F-170710-1005-1 is for laboratory and field testing. A typical calibration curve is shown below. This Clamp-On Current Probe can be used for the following specifications: Mil-Std. 461F CS114, Mil-Std. 461F CS115, Mil-Std. 461F CS116, DO-160 Section 20 and CISPR 32.



Specifications

Frequency:	10 kHz – 400 MHz
Internal diameter:	32 mm
External diameter:	71 mm
Height:	19 mm
ZtΩ ¹ :	0.35
dBΩ ¹ :	-9
Connector:	Type-N
DC to 400 MHz:	50 amperes
RF(CW):	2 amperes
Peak Pulse Current ² :	100 amperes

1: Probe calibrated with 50 Ω + j0Ω Load Impedance.
2: Depends upon the pulse width and pulse rep. rate.



Fischer Custom Communications, Inc.

20603 Earl St., Torrance, CA 90503
Phone: 310-303-3300

Email: sales@fischercc.com

© Fischer Custom Communications, Inc.